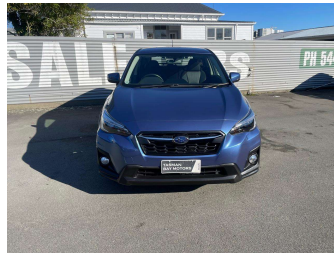



2018 Subaru XV FREE NZ DELIVERY*



Purchase Price **\$24,999**
Includes GST, Registration & Licensing


Indicative repayments
\$160.75 per week*
Based on a 48 month term & no deposit.
Total repayments (208) = **\$33,435.54**



Gain peace of mind with **Mechanical Breakdown Insurance. Ask us how.**



Top features
None Listed

Body Style	Hatchback
Odometer	46,000 km
Engine	2000 cc
Fuel Type	Petrol
Transmission	Auto, All Wheel Drive
Wheels	-
VIN	-
Interior	-
Safety	 Based on 2023 UCSR rating for 16-21 models

Reg No.	-
Ext Colour	Blue
History	Ex-Overseas
Seats	-
CO2 Emissions	-
Energy Economy	☆☆☆☆☆☆
Annual fuel cost not available	
Energy Consumption unknown.	
Stock ID: 6754	

TASMAN BAY MOTORS NELSON
 Tasman Bay Motors | Phone 03 544 4212 | Email sales@tasmanbaymotors.co.nz
 17 Salisbury Rd, Richmond, Nelson 7020, New Zealand
 www.tasmanbaymotors.co.nz

* Tasman Bay Motors is not a lender nor a financial adviser. Any amounts displayed should not be seen as an offer of finance or taken as financial advice. The interest rate, fees and loan term used in this calculation may not actually represent those available from lenders. Actual interest rates, fees and loan terms will vary per lender and are typically based on an assessment of your credit risk and responsible lending criteria. Any repayment amounts displayed are indicative only and have been calculated using several other indicative inputs. The interest rate used in this calculation is an arbitrary 13.99%, however exact interest rates vary per lender. The term of the loan used in this calculation is 48 month. Exact terms available vary per lender although options typically include 6, 12, 18, 24, 36, 48 and 60 months. This calculation also includes two typical mandatory fees charged by lenders. These are an account admin fee of \$4.33 per month (other payment frequencies may be available) and a one-off establishment fee of \$338.00. Typically, this fee can be paid upfront or, as in this calculation, be capitalised over the contract term, ie. included in the loan amount. These fees can vary per lender and other non-mandatory fees and charges may also apply. The total amount of repayments has been calculated by multiplying 208 weekly repayments (based on a 48 month term) by the weekly repayment amount of \$160.75 which equals \$33,435.54. This calculator does not consider any of your own personal circumstances and we strongly suggest you seek budgeting advice prior to committing to any loan contract. Responsible lending criteria and lender terms and conditions will likely apply to any finalised loan contract. Proof of security and/or vehicle insurance may also be required before proceeding.